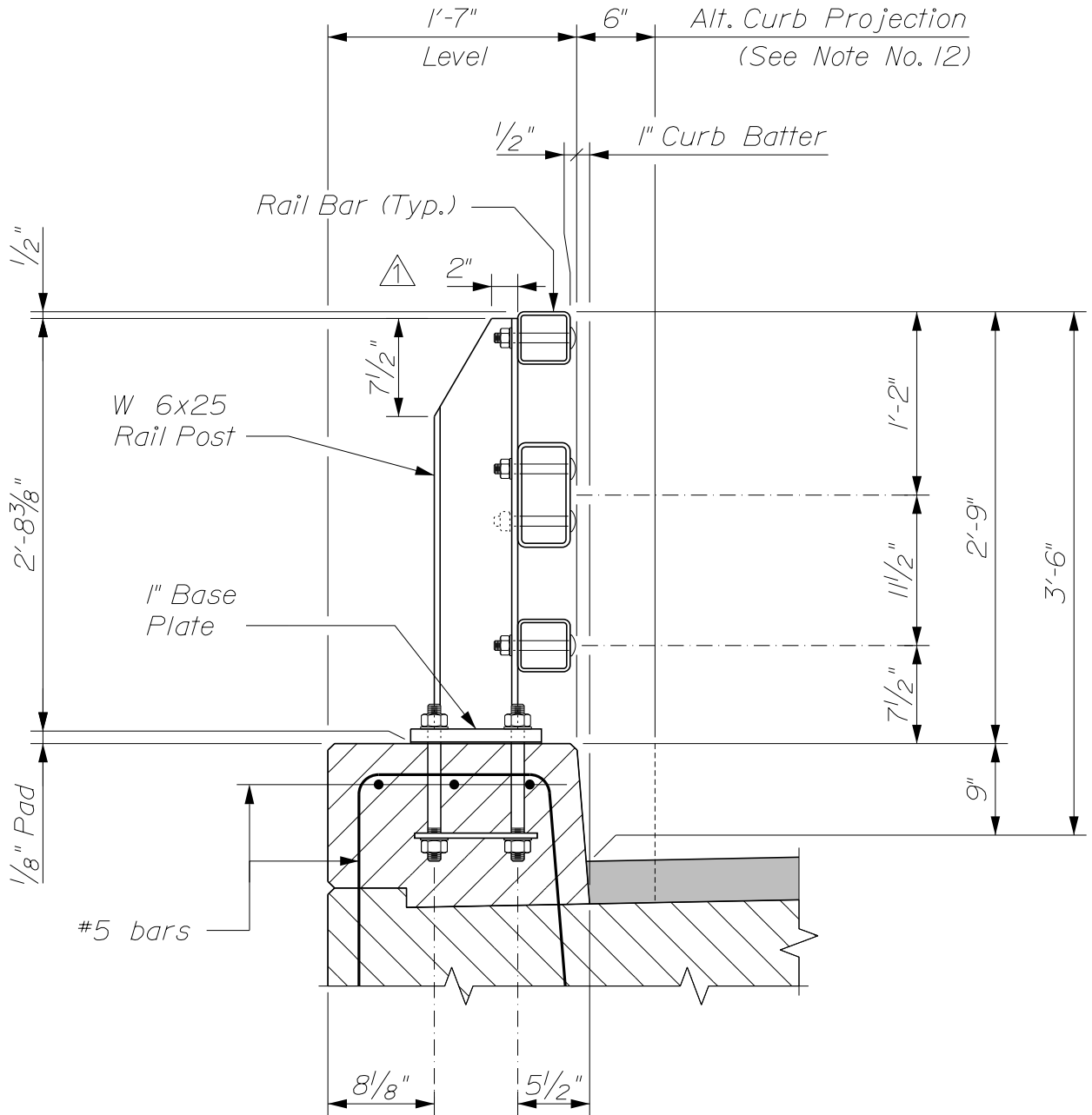


- Rail Bars:  
 ▲ HSS 8x4x<sup>5</sup>/<sub>16</sub> (1)  
 HSS 4x4x<sup>1</sup>/<sub>4</sub> (2)



~ TYPICAL RAILING SECTION ~  
 (3 - Bar Traffic / Bicycle Railing)

**STEEL BRIDGE RAILING**  
 Supersedes 507(05)